

SPEC SHEET: 32WR

32 GALLON WIRE RECEPTACLE *portable*

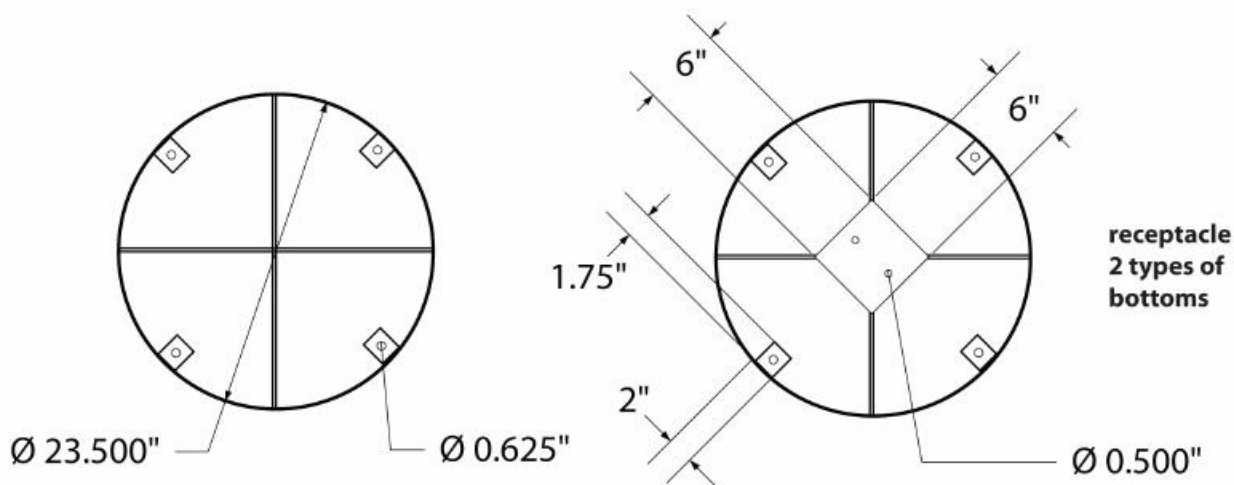
Wt. 78 lbs

photo

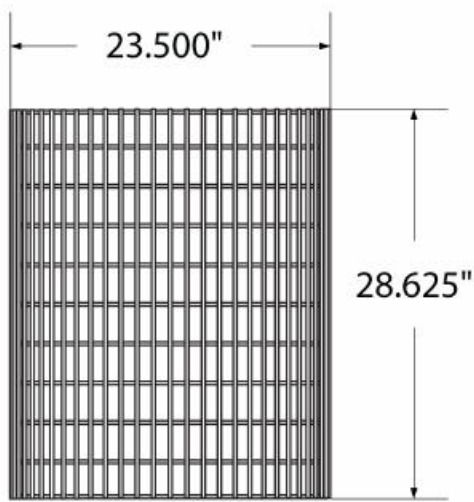


32SML LID
FOR SHOW ONLY

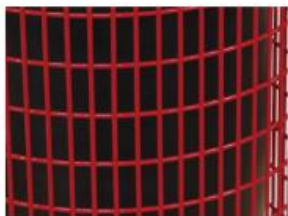
bottom / top view



front view



product details



Coated Surfaces:

- Thermoplastic coated
- Copolymer-based, environmentally safe
- Does not fade, crack, peel or warp
- Applied at a thickness of 25-30 mils.
- 5 Year warranty on coating

Construction:

- Welded steel wire construction

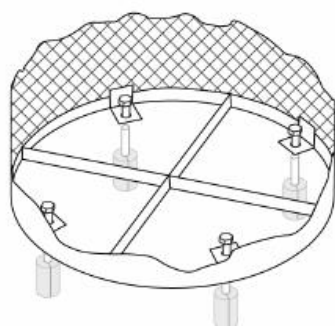
mounting types

P = Portable : no mount

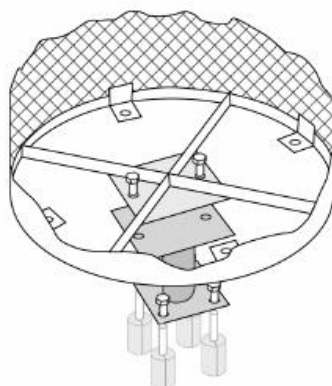
SM = Surface Mount:
concrete anchors
through taps welded
to legs

2 Option
anchor bolts attach
to B100 receptacle
mount

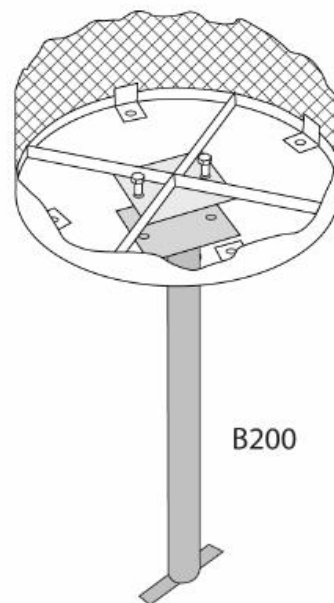
IG= In-Ground:
anchor bolts attach
to B200 receptacle
mount



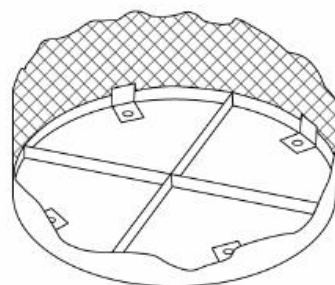
SURFACE MOUNT



B100
SURFACE MOUNT



B200
IN-GROUND



PORTABLE