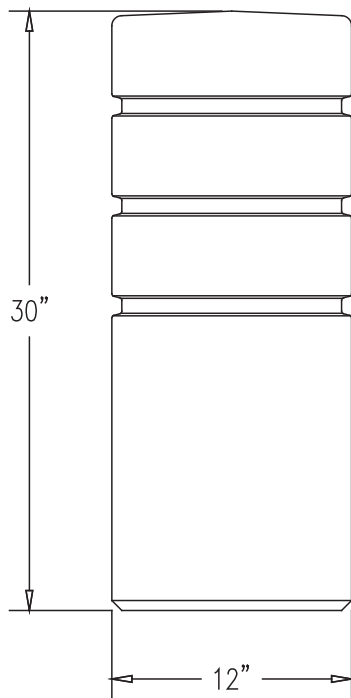


TF6005

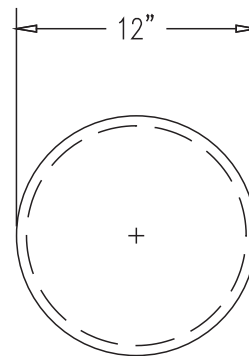
Concrete Bollard with 3 Reveal Lines

Product Data

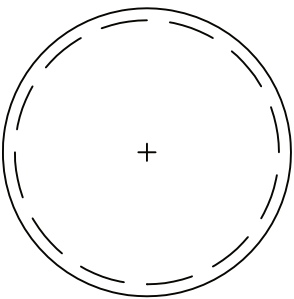
Size	12"dia x 30"h
Weight	285 lbs
Material	Reinforced Concrete
Anchoring	Option A -(4)1/2" Threaded Inserts Option B -4"dia x 14"Core
Sealed	Factory Sealed
Options	Reflective Tape in Reveals



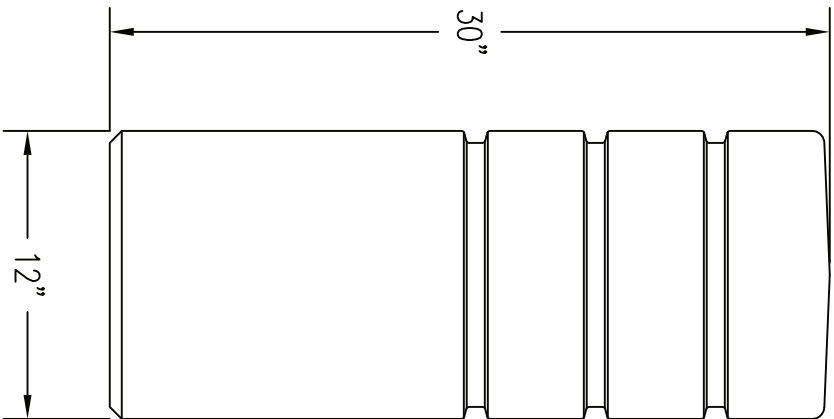
ELEVATION VIEW



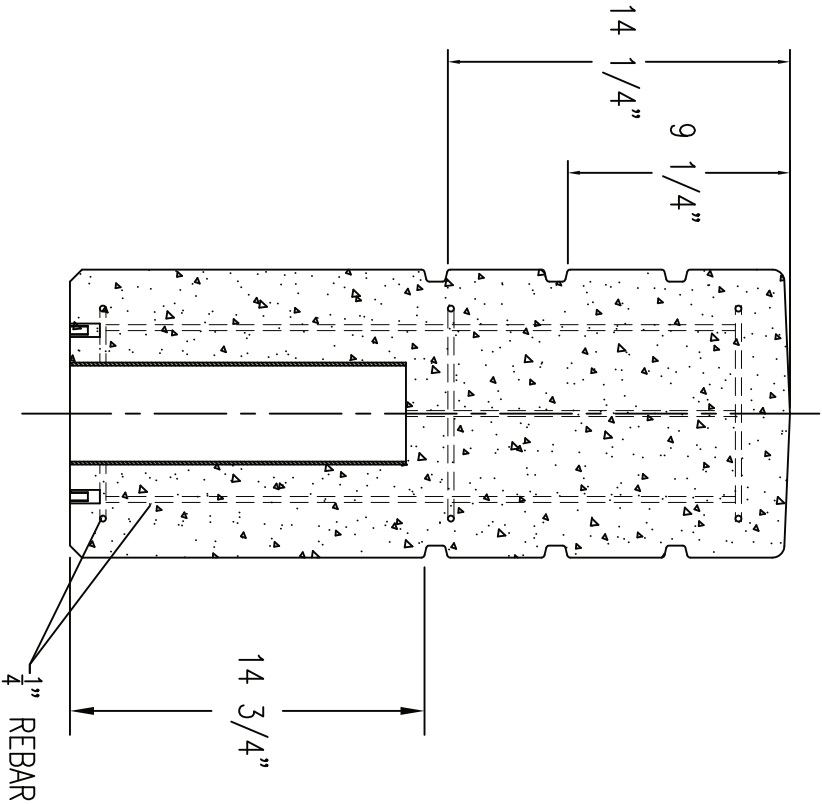
TOP VIEW



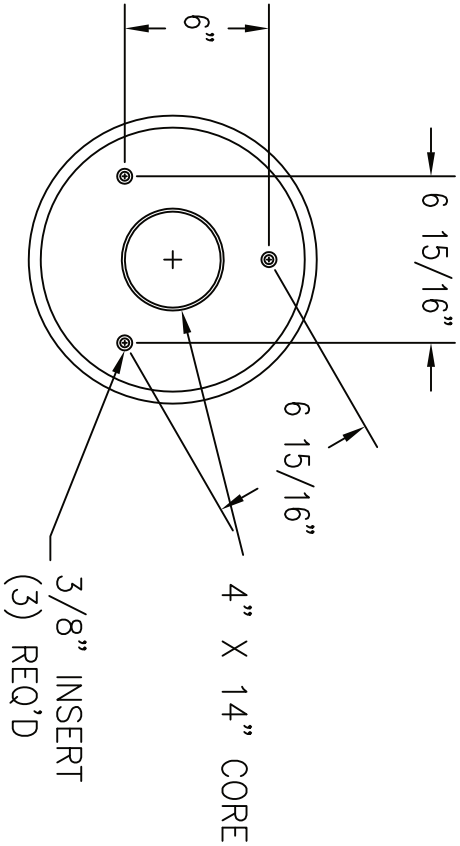
1 TOP VIEW



2 ELEVATION VIEW



4 CROSS SECTION



3 BOTTOM VIEW

REVISIONS		
NAME	DATE	NOTES
1	---	---
2	---	---
3	---	---
4	---	---
5	---	---
6	---	---
7	---	---
8	---	---

CONFIDENTIAL INFORMATION
THESE DRAWING, SPECIFICATIONS AND
OTHER INFORMATION AND DOCUMENTS
ACCOMPANYING THEM ARE THE
CONFIDENTIAL AND PROPRIETARY PROPERTY
OF WAUSAU TILE, INC. THE DRAWINGS
THEMSELVES SHALL BELONG TO THE
OWNER FOR USE ONLY ON THE PROJECT.
ANY ADDITIONAL USE SHALL REQUIRE THE
PRIOR WRITTEN APPROVAL OF WAUSAU TILE,
INC. THE PROPRIETARY INFORMATION
CONTAINED WITHIN THE DRAWINGS AND THE
DOCUMENTS IS AND SHALL REMAIN THE
SOLE PROPERTY OF WAUSAU TILE, INC.

JOB NAME
ADDRESS
CITY, STATE ZIP

UNLESS OTHERWISE SPECIFIED
DIMENSIONS ARE IN INCHES
FRACTIONS ±1/8"

DRAWN BY: SK
DATE: 6/11/15
CO NUMBER: ?
WEIGHT: 285 LBS

PRODUCT NO.

TF 6005