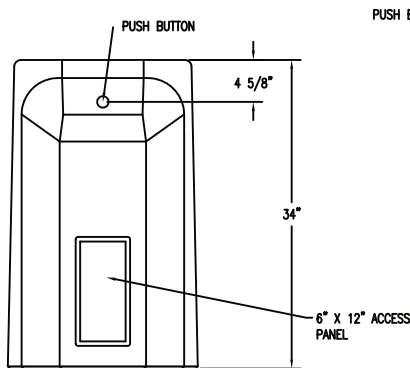
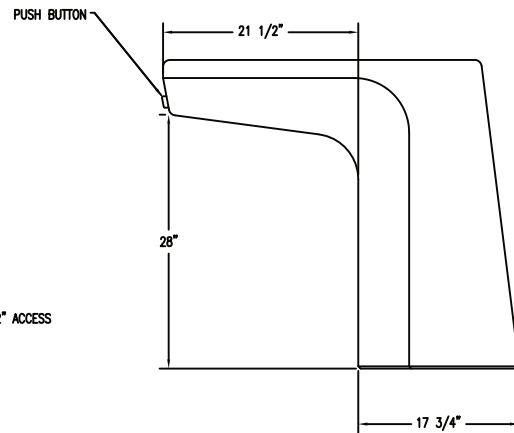


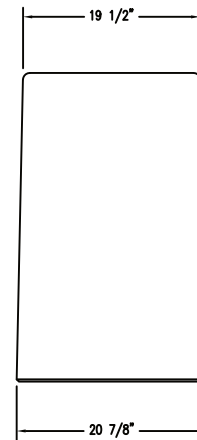
1 TOP VIEW
Scale: 1/8" = 1"



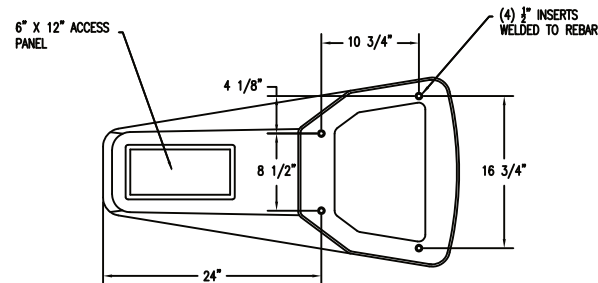
6 FRONT ELEVATION
Scale: 1/8" = 1"



2 SIDE ELEVATION
Scale: 1/8" = 1"

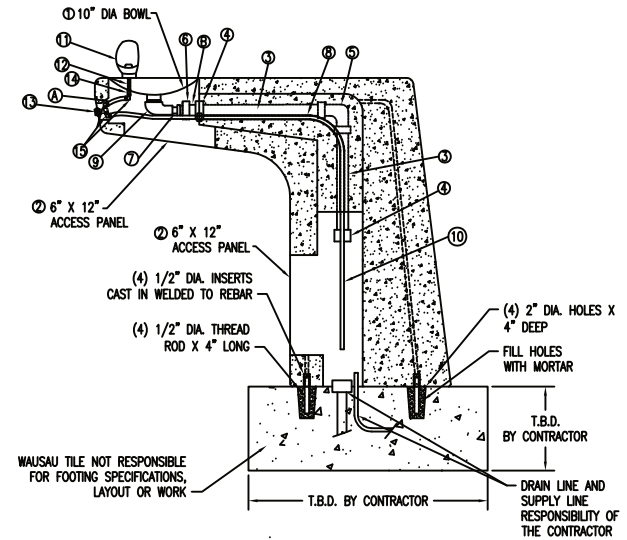


4 BACK ELEVATION
Scale: 1/8" = 1"



3 BOTTOM VIEW
Scale: 1/8" = 1"

PARTS LIST FOR ASSEMBLY KIT TF 7070				
ITEM #	DESCRIPTION	PART #	QTY.	
1	10" DIA. BOWL	700700	1	
2	6" X 12" ACCESS PANEL	700831	2	
3	20' OF 1 1/2" sch. 40 PVC PIPE	P40P120	1	
4	1 1/2" sch. 40 PVC COUPLER	PDWVCJ	2	
5	1 1/2" sch. 40 PVC 90° ELBOW	PDWV9J	1	
6	1 1/2" SOCKET TO 1 1/4" COMPRESSION RING	PDWV/FAPNJH	1	
7	1 1/4 X 12 20 GA TBE EXT TUBE	PFET3403	1	
8	1/2" ELECTRICAL CONDUIT		30"	
9	OFFSET DRAIN	M155WC	1	
10	3/8" PLASTIC TUBING	PF143006	100'	
11	WTR COLR BUBBLER CP	PF20050	1	
12	1/4" X 1-1/2" SS SCH40 304 NIP	DS44NBJ	1	
13	PUSH ACTIVATE VLV SS (WITH TRIM CAP)	H58745S	1	
14	1/4" SS 304 150# THRD COUP	IS4CTCB	1	
15	1/4" RIGID ELBOW 3/8" TUBE FIT	JPP481222W	3	



6 SIDE SECTION VIEW
Scale: 1/8" = 1"

DRINKING FOUNTAIN MOUNTING INSTRUCTIONS

- 1) DRILL HOLES INTO FOOTING PER PATTERN OF INSERTS ON BOTTOM OF FOUNTAIN.
- 2) THREAD (4) 1/2" DIA. ROD INTO (4) INSERTS ON BOTTOM OF FOUNTAIN.
- 3) FILL DRILLED HOLES WITH NON-SHRINK MORTAR OR EPOXY.
- 4) PLACE FOUNTAIN OVER HOLES AND LOWER DOWN TO FOOTING.
- 5) BRACE FOUNTAIN UNTIL MORTAR IS HARDENED

PLEASE CONTACT YOUR LOCAL GOVERNMENT OFFICE
FOR BUILDING CODES IN YOUR AREA

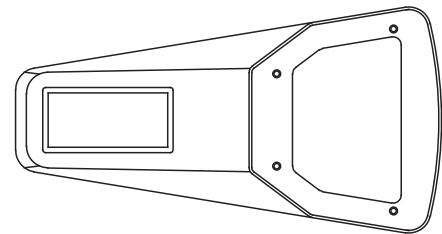
REVISIONS						DRAWN BY L.B.E.		JOB		MATERIAL	
NO.	DATE	BY	NO.	DATE	BY	TITLE		JOB NO.		WEIGHT	
1	11/6/11	JPE	4			SCALE		UNLESS OTHERWISE SPECIFIED DIMENSIONS ARE IN INCHES		DATE	
2			5			CHECKED		2 PL. 3/8" 3 PL. 1/2"		FINISH OPTIONS	
3			6							DWG. NO. TF7070	

TF7070

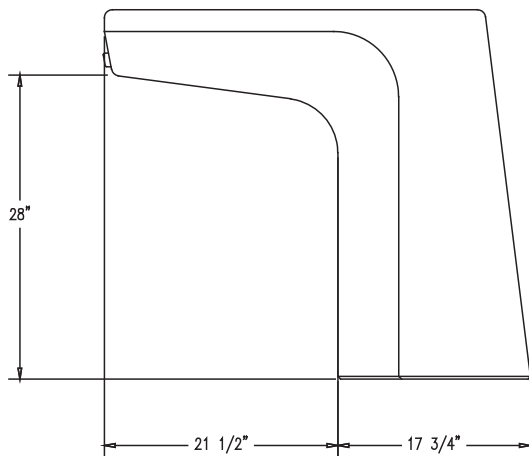
Concrete Single Drinking Fountain

Product Data

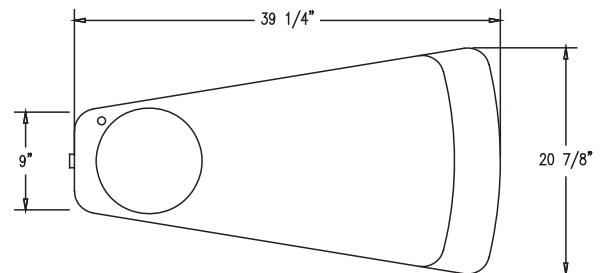
Size	39 1/4" x 20 3/4" x 34" h
Weight	780 lbs
Material	Reinforced Concrete (1) Spout (2) Access Panels (1) S.S. Bowl (1) Push Button
Reinforcing	Rebar
Anchoring	(4) 3/8" Threaded Inserts
Sealed	Factory Sealed
Drinking Bowl	9 3/4" dia x 1 7/8"



BOTTOM VIEW



ELEVATION VIEW



TOP VIEW

Site Furnishings Limited Warranty:

For a period of two (2) years for concrete products, one (1) year for plastic products and five (5) years for metal products when the customer has received their product, Wausau Tile, Inc. warrants its concrete products against defects in workmanship and materials per industry standards. This warranty does not cover the above products for cracking and faulting caused by settling due to an improper base; nor does it cover damage caused by impact, vandalism or natural disaster.