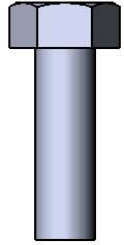
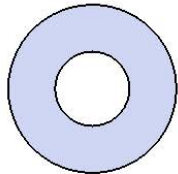


Model #
TS36BC-CBC-SET

HARDWARE



5/16" x 1"
Machine Bolt

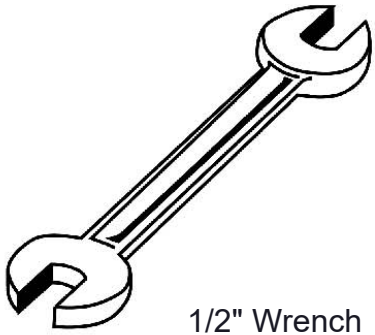


5/16" Washer

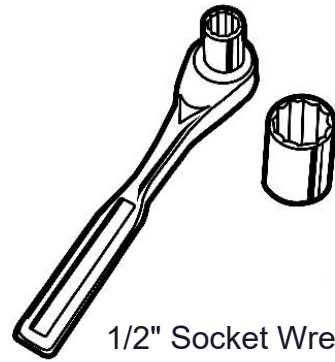


5/16" Kep Nut

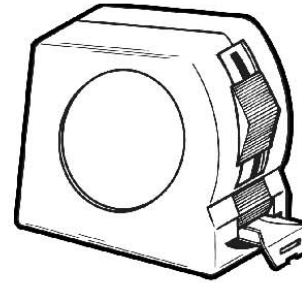
TOOLS REQUIRED



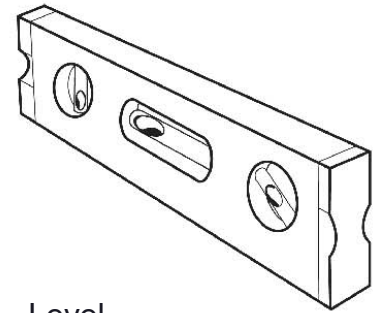
1/2" Wrench



1/2" Socket Wrench



Tape Measure



Level

PRODUCT SPECIFICATIONS

TS36BC-CBC-SET BISCAYNE SURFACE MOUNT SOLID TABLE W/ 4 SEATS

Top & Chairs: 11 gauge steel flat, spun to form. Top is additionally supported with 7 gauge x 1-1/2" flat bar. Seats are fabricated with 2" x 1" rectangular and 1" square 11 gauge steel tubing. All electrically MIG welded.

Coating: Electrostatic powder coated application oven cured.

Frame: Table support column is 4" x 4" x 11 gauge pre-galvanized structural steel tubing. Seat backs and legs are fabricated from 1-1/2" square 11 gauge steel tubing. Table top attachment structure is fabricated from 1-1/2" x 1-1/2" x 7 gauge structural steel flat bar. Table surface mount plates are 8" x 8" x 1/4" thick. Seat surface mount plates are 1-1/2" x 3" x 1/4" thick. All electrically MIG welded.

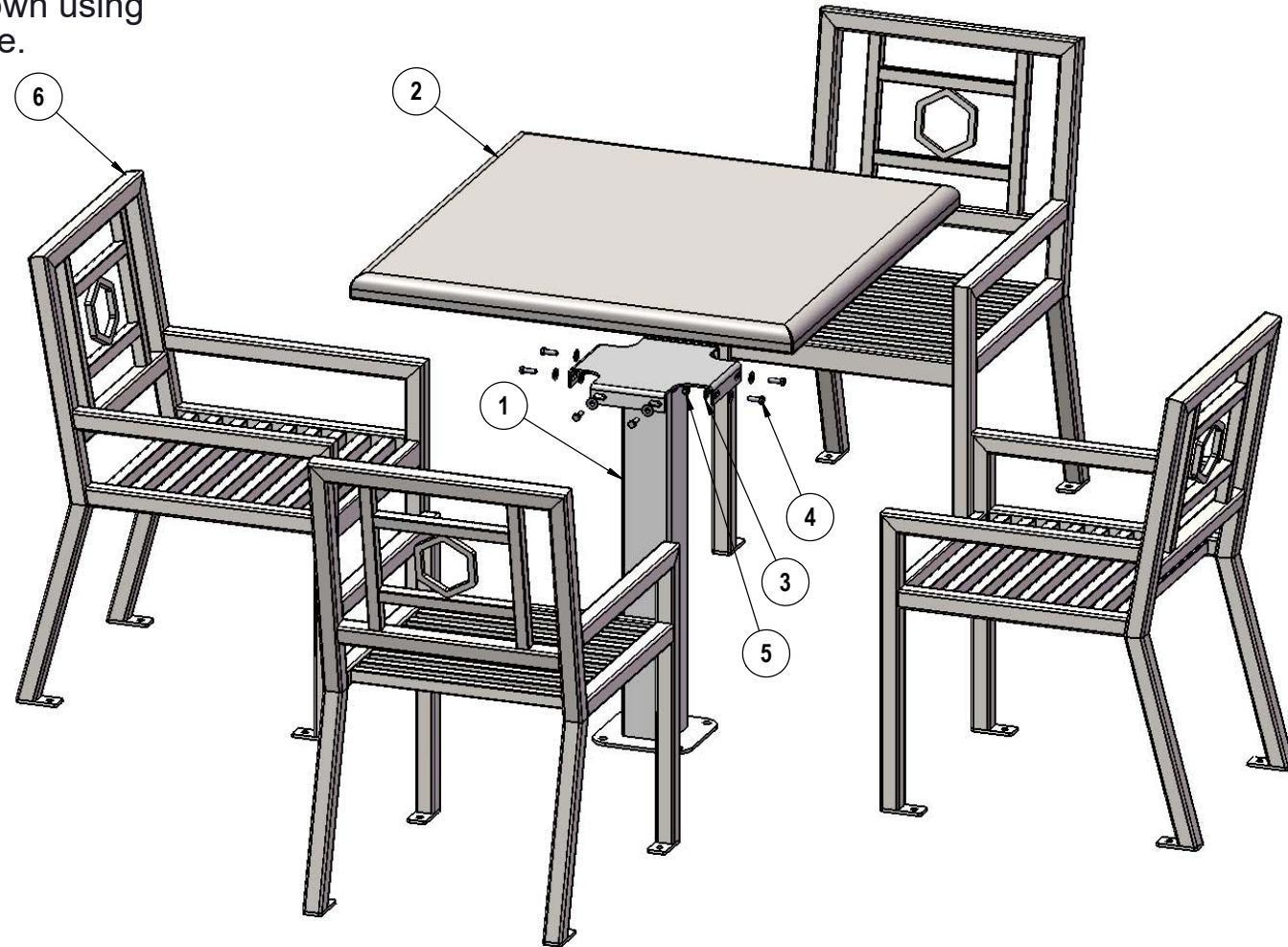
Frame Coating: Steel is sandblasted to near white condition. Coated with zinc rich epoxy primer and top coated with electrostatic powdercoat, oven cured.

Hardware: All stainless steel hardware fasteners.

Dimensions: Top is 36" square x 30" high. Seats are 21" long x 25-3/4" wide x 36" high. Outside to outside dimensions of 4 seats table is 86" x 86".

COMPONENTS

Attach the 36" Square Table to the Table Post as shown using the specified hardware.



Recommended Surface Mount Hardware:
3/8" x 3" Concrete Expansion Anchor Bolts
(Not Included)

| ITEM NO. | PartNo | DESCRIPTION | QTY |
|----------|------------|------------------------------|-----|
| 1 | V30SM-T | 30 SM Table Post | 1 |
| 2 | 01-04-0385 | 36" square rolled top | 1 |
| 3 | 33-02-0007 | 5/16" SS Washer | 16 |
| 4 | 33-05-0029 | 5/16" x 1" Machine Bolt (SS) | 8 |
| 5 | 33-03-0012 | 5/16" Keps Nut (SS) | 8 |
| 6 | 53-HX2 | 53-HX2 | 4 |

OVERALL DIMENSIONS

