

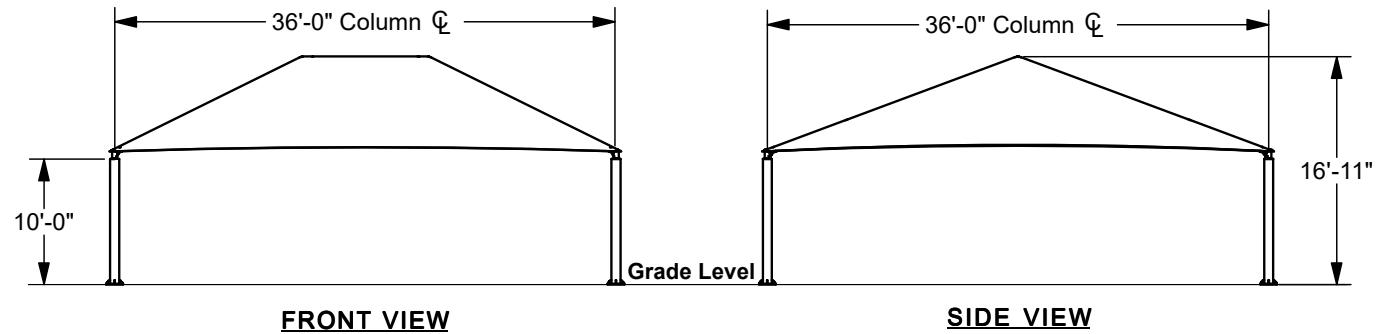
SQUARE HIP SHADE

**36' x 36' x 10'**

MODEL #:

SD363610SG (With Glide Elbows)

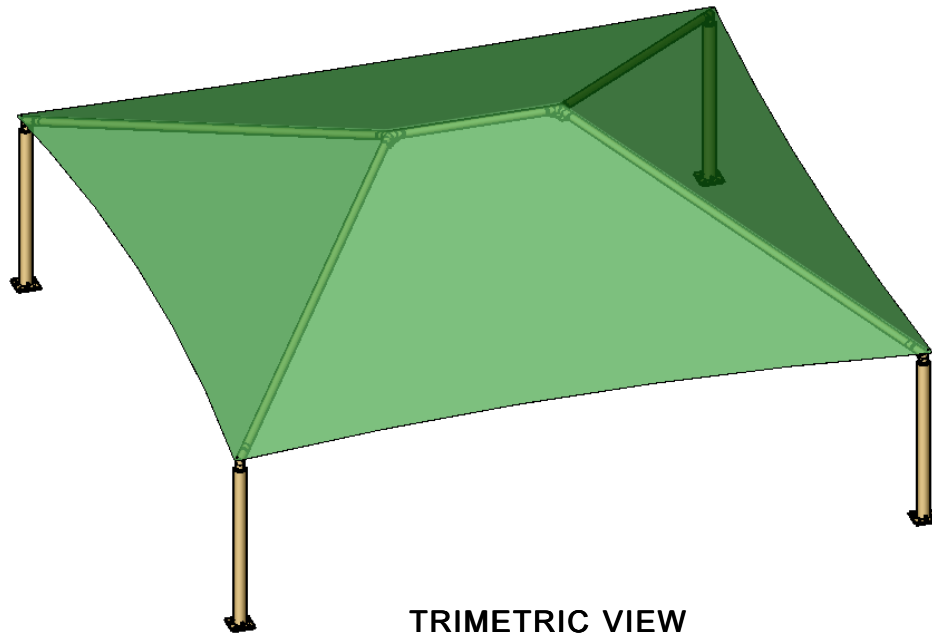
SD363610SN (Without Glide Elbows)



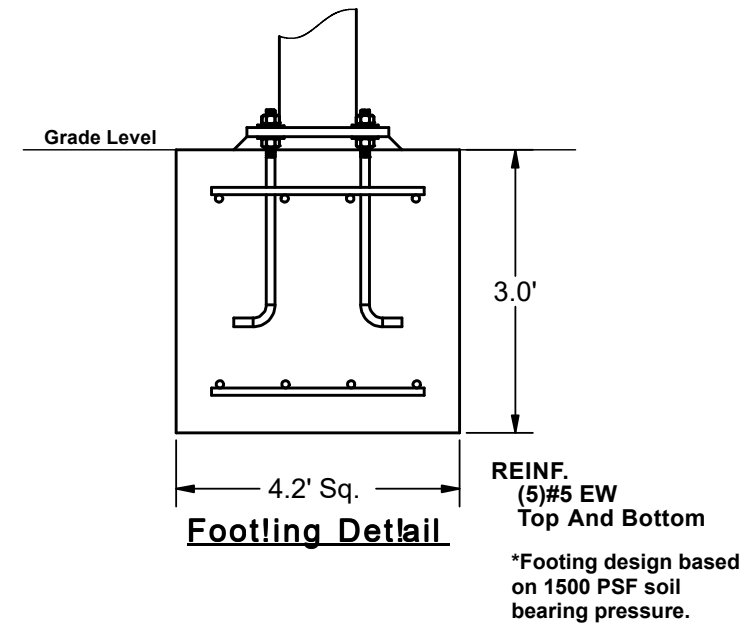
**FRONT VIEW**

**SIDE VIEW**

REF.#	PART DESCRIPTION	QTY.
1	Ø8.6"Capped Surface Mount Column	4
2	Angled Elbow	4
3	Ø5.0"Hip Rafter w/ Swaged End	4
4	Ø5.0"Ridge Pole w/ Swaged Ends	1
5	Square "Y" Connection	2
6	Fabric Cover w/ Cable Insert	1
7	Frame Hardware Kit	1



**TRIMETRIC VIEW**



**Footling Detail**

# SQUARE HIP SHADE

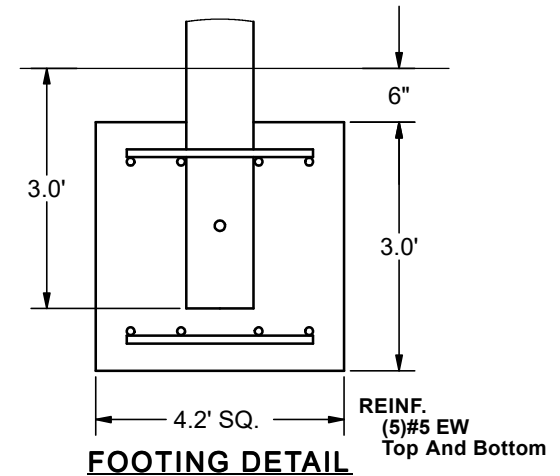
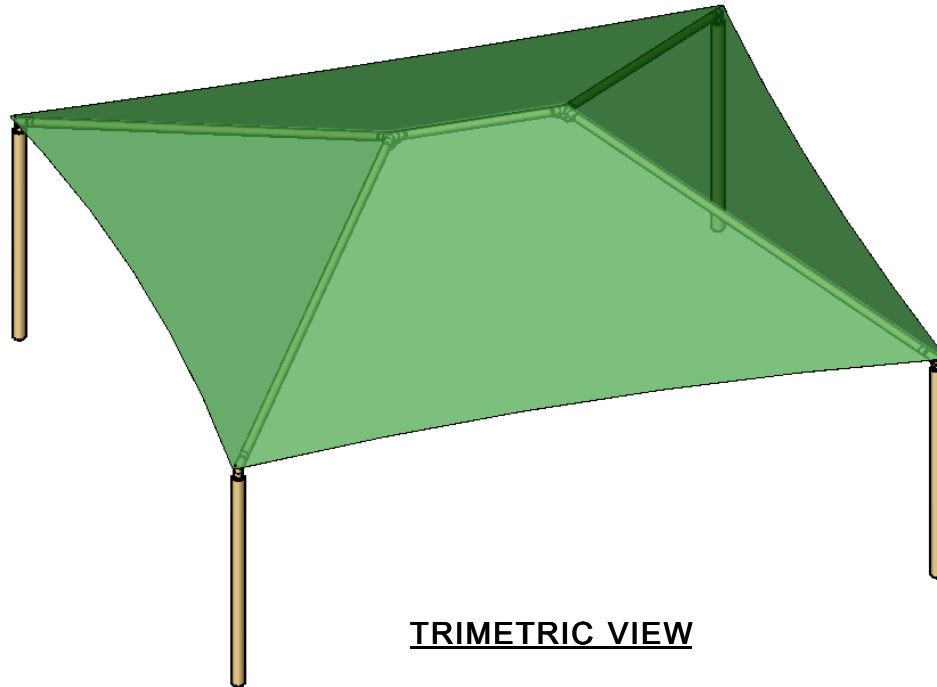
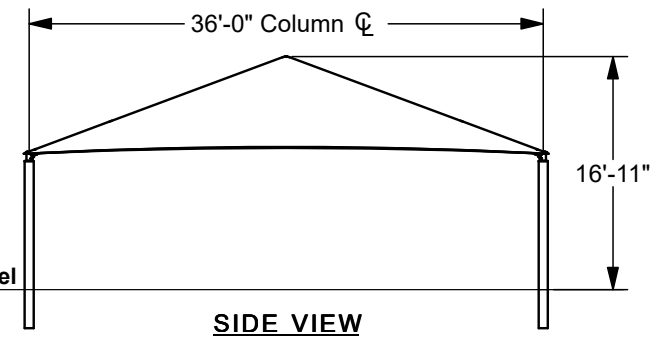
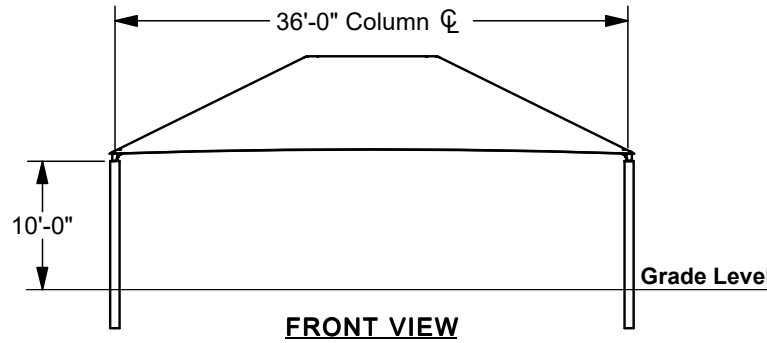
## 36' x 36' x 10'

MODEL #:

SD363610IG (With Glide Elbows)

SD363610IN (Without Glide Elbows)

REF.#	PART DESCRIPTION	QTY.
1	Ø8.6"Capped Embedded Column	4
2	Angled Elbow	4
3	Ø5.0"Hip Rafter w/ Swaged End	4
4	Ø5.0"Ridge Pole w/ Swaged Ends	1
5	Square "Y" Connection	2
6	Fabric Cover w/ Cable Insert	1
7	Frame Hardware Kit	1



\*Footing design based on 1500 PSF soil bearing pressure.