

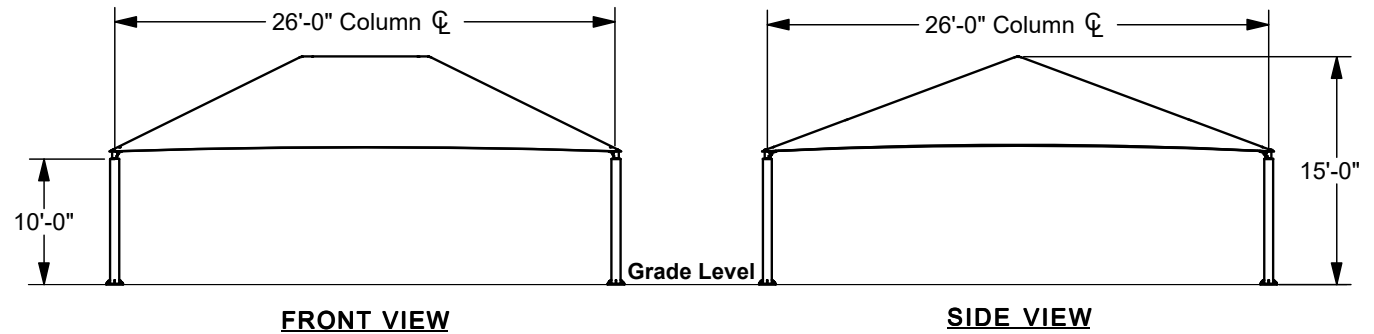
SQUARE HIP SHADE

26' x 26' x 10'

MODEL #:

SD262610SG (With Glide Elbows)

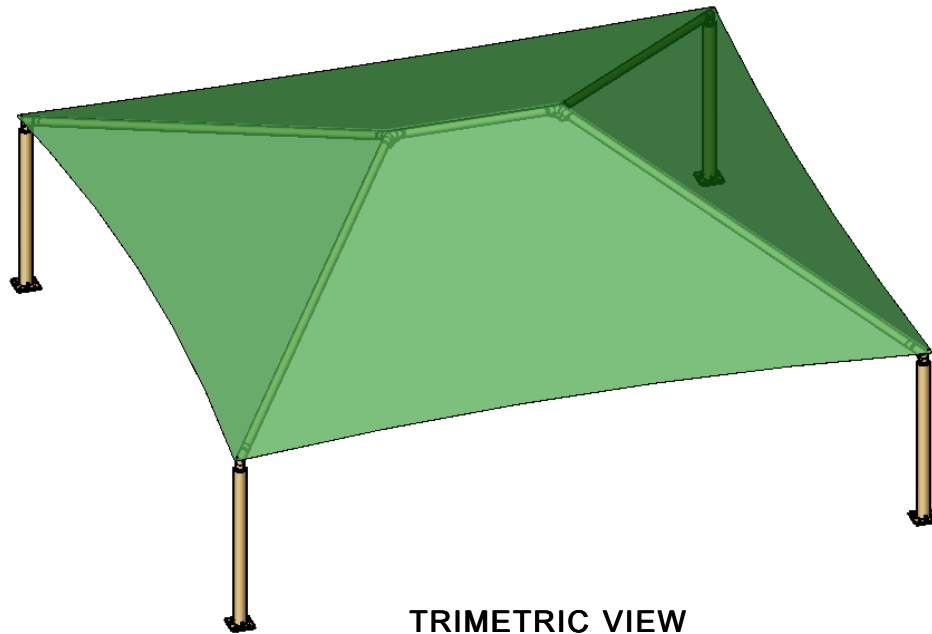
SD262610SN (Without Glide Elbows)



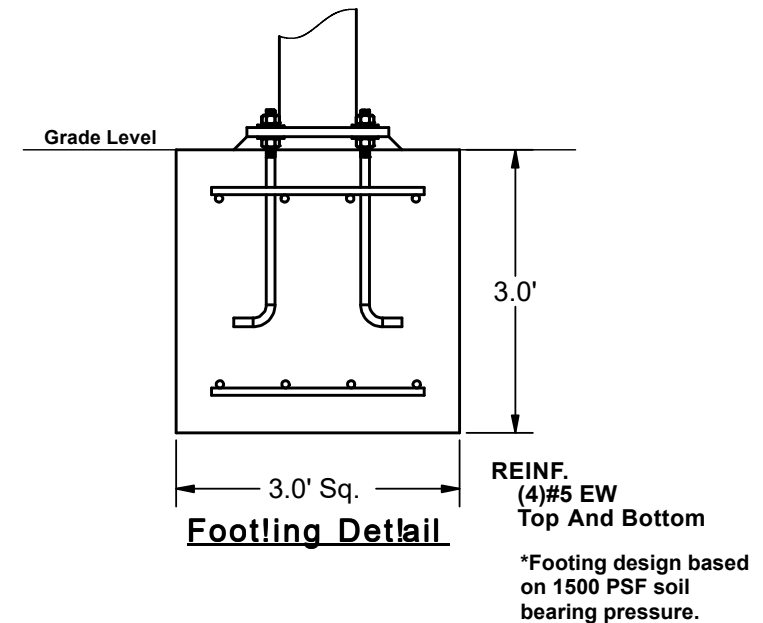
FRONT VIEW

SIDE VIEW

REF.#	PART DESCRIPTION	QTY.
1	Ø5.5" Capped Surface Mount Column	4
2	Angled Elbow	4
3	Ø3.5" Hip Rafter w/ Swaged End	4
4	Ø3.5" Ridge Pole w/ Swaged Ends	1
5	Square "Y" Connection	2
6	Fabric Cover w/ Cable Insert	1
7	Frame Hardware Kit	1



TRIMETRIC VIEW



REINF.
(4)#5 EW
Top And Bottom

*Footling design based
on 1500 PSF soil
bearing pressure.

SQUARE HIP SHADE

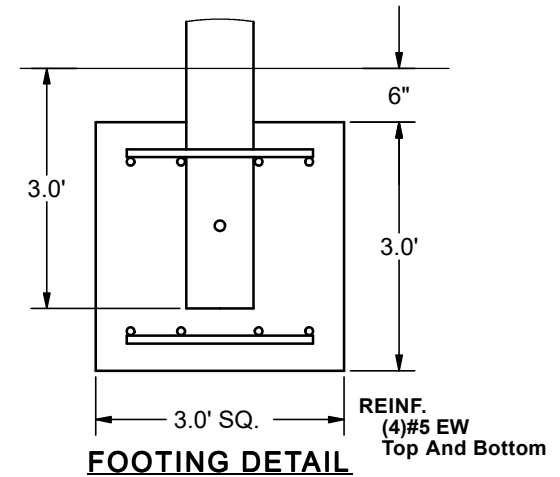
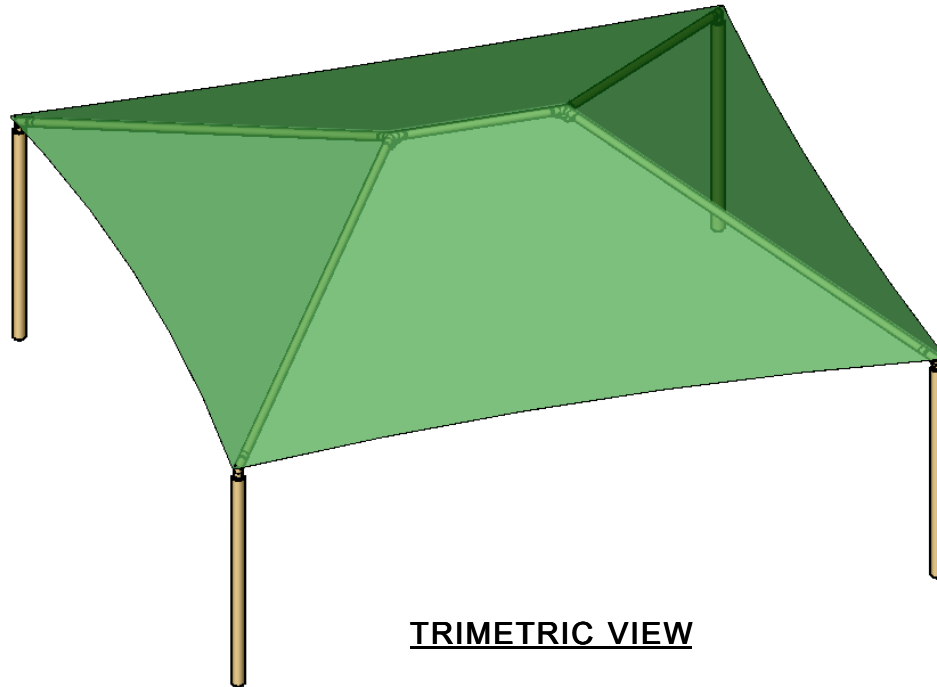
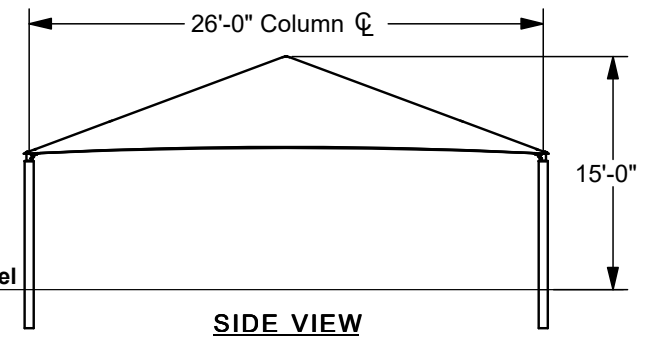
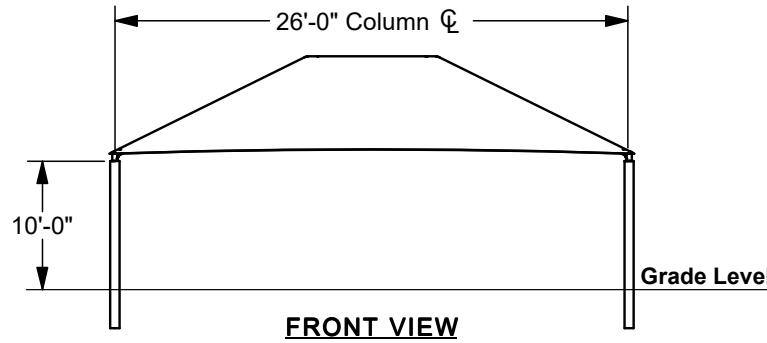
26' x 26' x 10'

MODEL #:

SD262610IG (With Glide Elbows)

SD262610IN (Without Glide Elbows)

REF.#	PART DESCRIPTION	QTY.
1	Ø5.5"Capped Embedded Column	4
2	Angled Elbow	4
3	Ø3.5"Hip Rafter w/ Swaged End	4
4	Ø3.5"Ridge Pole w/ Swaged Ends	1
5	Square "Y" Connection	2
6	Fabric Cover w/ Cable Insert	1
7	Frame Hardware Kit	1



*Footing design based on 1500 PSF soil bearing pressure.