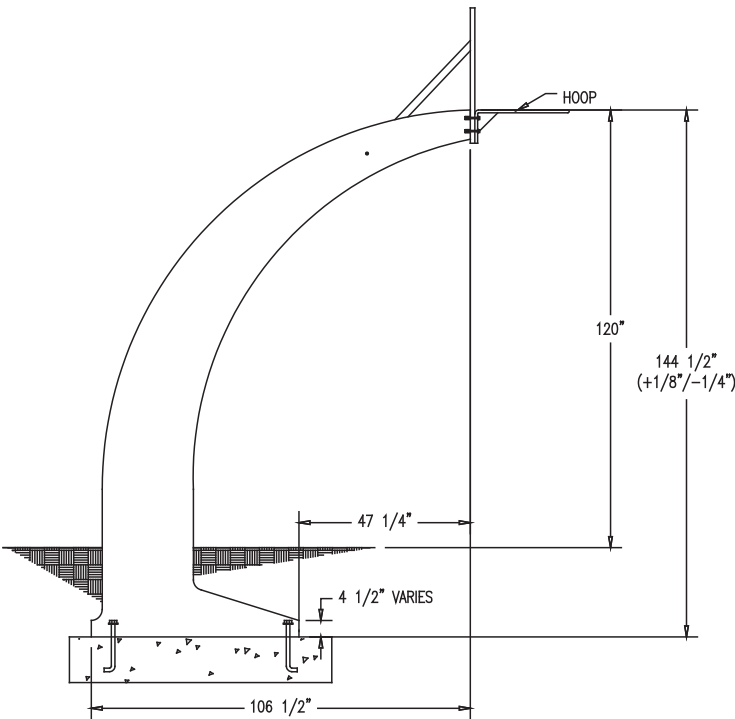


TF7175

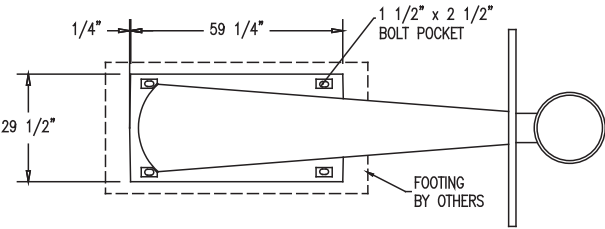
Concrete Basketball Standard

Product Data

Size	160"x 30" x 144 1/2"h
Weight	3,800 lbs
Material	Reinforced Concrete
Reinforcing	Rebar
Anchoring	Required
Sealed	Factory Sealed
Options	Backboards Rims



ELEVATION VIEW



TOP VIEW

Site Furnishings Limited Warranty:

For a period of two (2) years for concrete products, one (1) year for plastic products and five (5) years for metal products when the customer has received their product, Wausau Tile, Inc. warrants its concrete products against defects in workmanship and materials per industry standards. This warranty does not cover the above products for cracking and faulting caused by settling due to an improper base; nor does it cover damage caused by impact, vandalism or natural disaster.



FurnitureLeisure

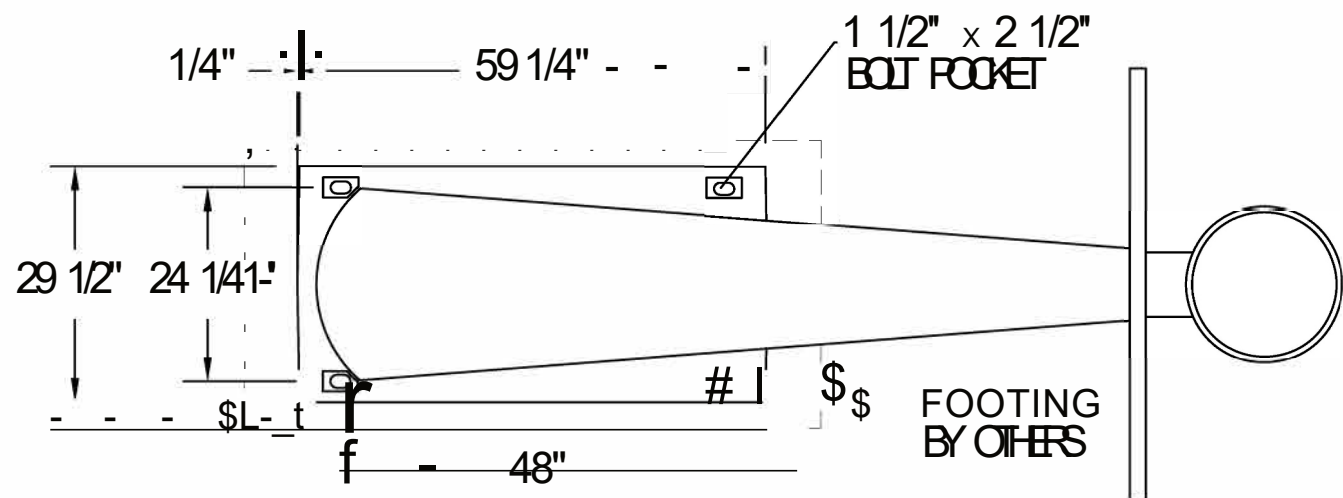
Commercial Site Furnishings

1-800-213-2401 | sales@furnitureleisure.com

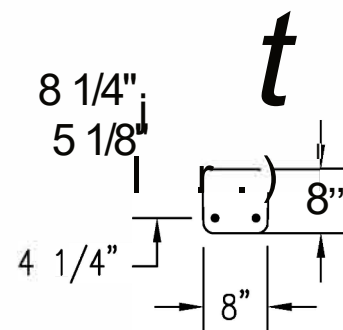
FurnitureLeisure.com PoolFurnitureSupply.com

PicnicFurniture.com PicnicTableSupplier.com

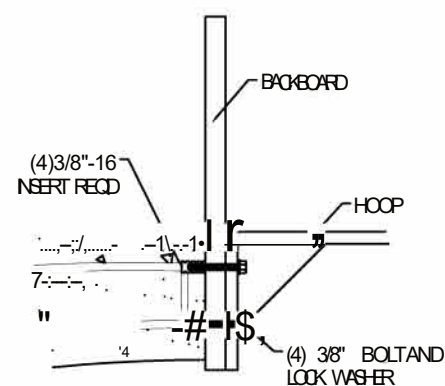
ParkTables.com UBrace.com



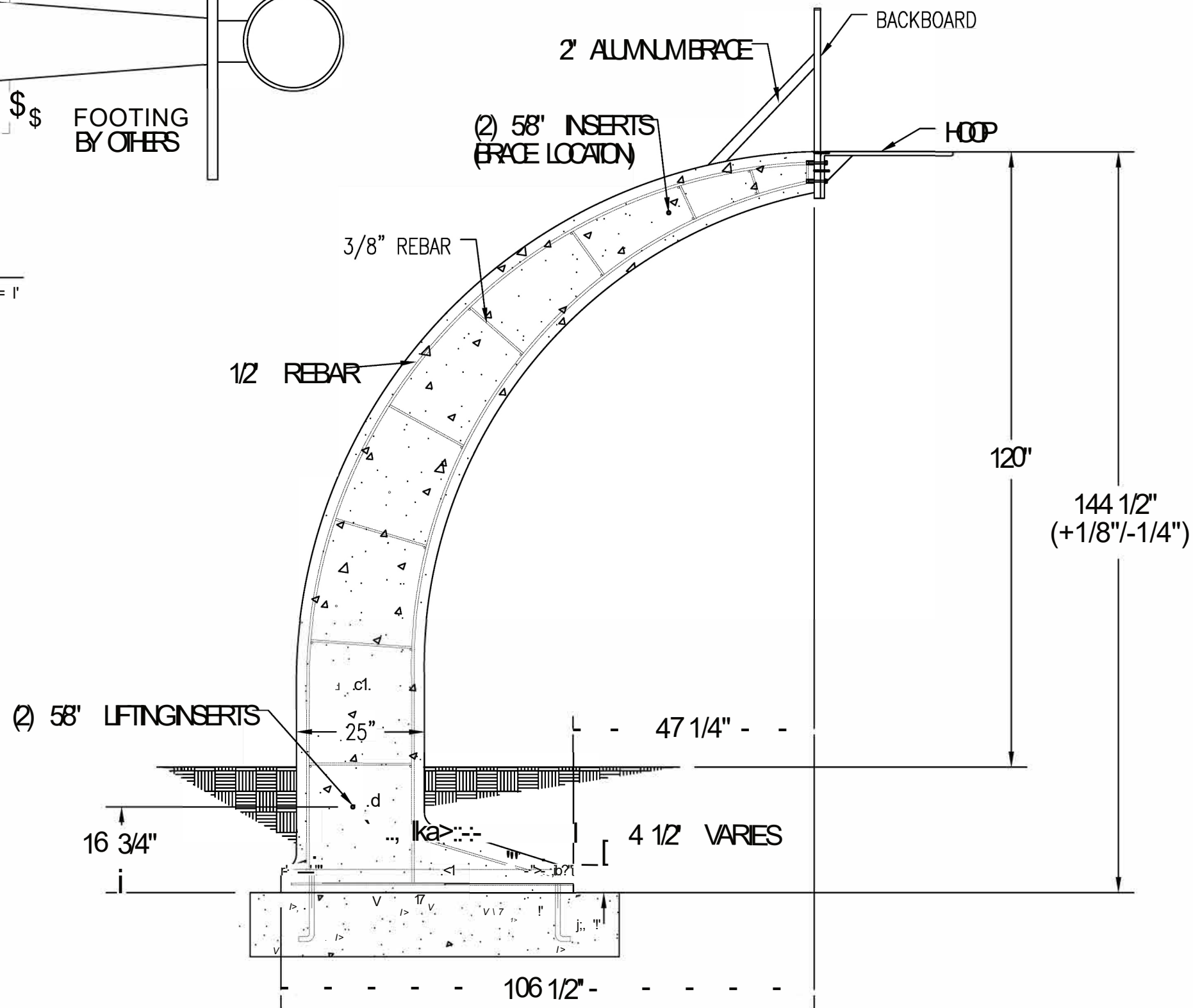
1 TOP VIEW
Scale: 1/2" = 1'



3 MOUNTING FACE
Scale: 1/2" = 1'



4 BACKBOARD MOUNTING
Scale: 1/2" = 1'



2 SECTION VIEW
Scale: 1/2" = 1'

REVISIONS		
NAME	DATE	NOTES
1 TAS	11/4/16	UPDATED DIMS
2 TAS	14/24/17	UPDATED DIMS
3 ---	---	---
4 ---	---	---
5 ---	---	---
6 ---	---	---
7 ---	---	---
8 ---	---	---

CONFIDENTIAL INFORMATION
THESE DRAWING SPECIFICATIONS AND
OTHER INFORMATION AND DOCUMENTS
ACCOMPANYING THEM ARE THE
CONFIDENTIAL AND PROPRIETARY PROPERTY
OF WALSAUTILE, INC. THE DRAWINGS
THEMSELVES SHALL BELONG TO THE OWNER
FOR USE ONLY ON THE PROJECT. ANY
ADDITIONAL USE SHALL REQUIRE THE PRIOR
WRITTEN APPROVAL OF WALSAUTILE, INC.
THE PROPRIETARY INFORMATION CONTAINED
WITHIN THE DRAWINGS AND THE DOCUMENTS
IS AND SHALL REMAIN THE SOLE PROPERTY
OF WALSAUTILE, INC.

WALSAUTILE NC

WALSAUTILE W

UNLESS OTHERWISE SPECIFIED
DIMENSIONS ARE IN INCHES
FRACTIONS ± 1/8"

DRAWN BY: LBE

DATE 6/25/08

CO NUMBER?

WEIGHT ?

SHEET NO.

TF7175